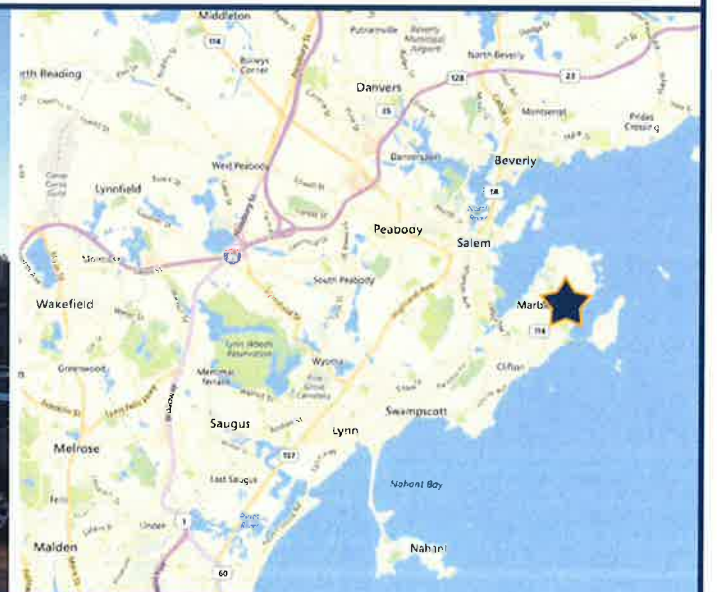


OLD MILLER'S PLAZA 89 Pleasant Street MARBLEHEAD, MASSACHUSETTS



- 7,926 SF center anchored by Starbucks
- 22 parking spaces
- 17,400 cars per day on Pleasant Street
- Area retailers include: Ace Hardware, Comellas, Hip Baby Gear, Irresistibles, CVS Pharmacy, Get in Shape, West Marine and Bobbles and Lace



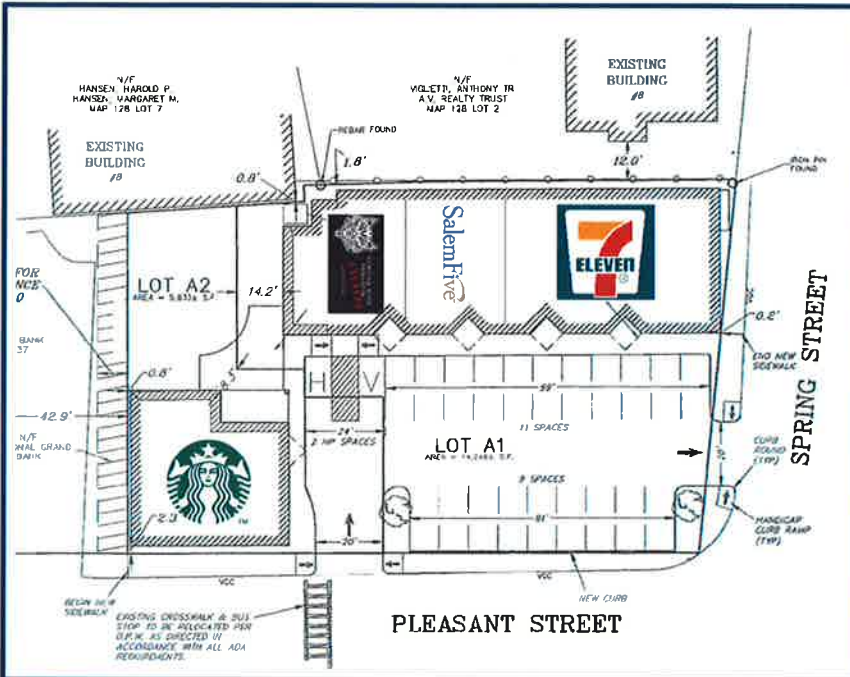
SARAH KLAMAN • C: 781.696.5303 • E: sarah@centercorpretail.com
CENTERCORP Retail Properties • 600 Loring Avenue • Salem, MA • 01970
O: 978.741.4740 • F: 978.745.1223 • www.centercorpre.com

CENTERCORP
Retail Properties

OLD MILLER'S PLAZA

89 Pleasant Street

MARBLEHEAD, MASSACHUSETTS



TENANT AREA	
Starbucks	2,120 SF
Howling Wolf Express	1,384 SF
Salem Five	2,112 SF
7-Eleven	2,310 SF

Demographics	1 Mile	2 Mile	3 Mile
Population	11,860	27,200	57,061
Households	5,350	10,727	24,215
Median Household Income	\$97,160	\$97,038	\$75,288



SARAH KLAMAN • C: 781.696.5303 • E: sarah@centercorp retail.com
 CENTERCORP Retail Properties • 600 Loring Avenue • Salem, MA • 01970
 O: 978.741.4740 • F: 978.745.1223 • www.centercorp retail.com

